

## Which spelling? Challenge 3

1. There are lots of different ways to spell the /s/ sound. Look at the pictures below then choose the correct letter or letter group to complete each word. Use the dictionary to help you.

**c**

**sc**

**s**

a)



\_\_\_andwich

b)



\_\_\_ycle

c)



\_\_\_issors

d)



\_\_\_entipede

2. Now do the same for the words below which start with the /f/ sound. Use the dictionary to help you.

**f**

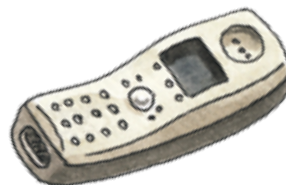
**ph**

a)



\_\_\_rog

b)



\_\_\_one

c)



\_\_\_oto

d)



\_\_\_arm

/s/
/a/
/t/
/p/
/i/
/n/
/m/
/d/
/g/
/o/
/k/
/e/
/u/
/r/
/h/
/b/
/f/
/l/
/j/
/v/
/w/
/ks/
/y/
/z/
/kw/
/ch/
/sh/
/th/